



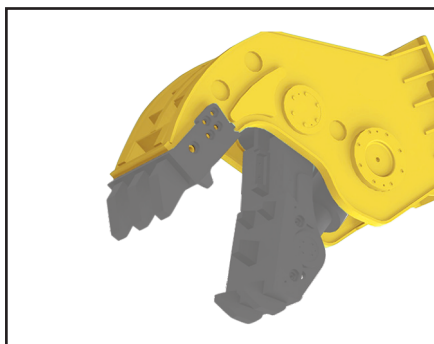
Manufacturing Relationship, Distributing Quality



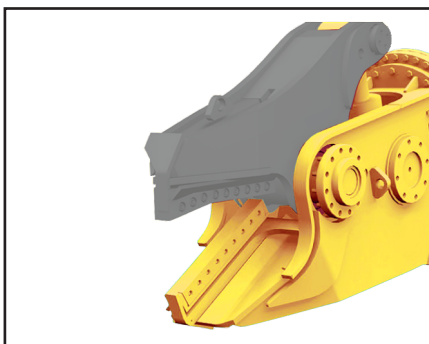
Constromine Pneumatic Crawler Drill is a versatile down the hole crawler drill, ideal for construction, mining & queries it is easy to transport and set up at any kind of site. it is a simple design, easy to operate & easy to maintain with easily accessible service point

*Competitive Solutions
High Productivity*

OTHER PRODUCTS



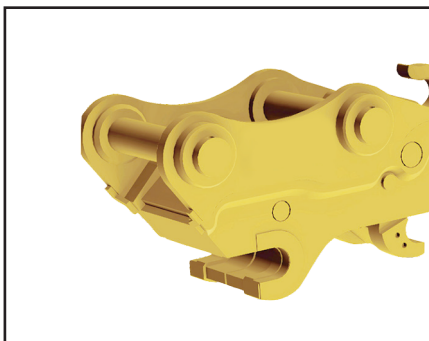
HYDRAULIC FIXED PULVERIZER



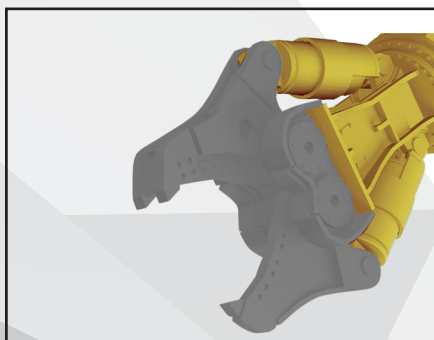
HYDRAULIC SHEAR



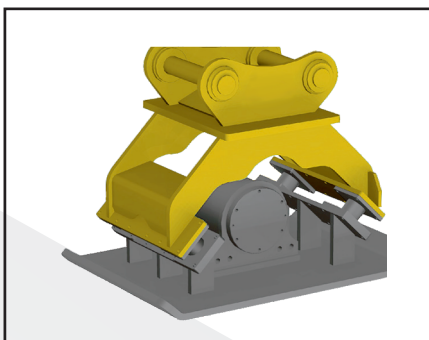
CRUSHER



QUICK COUPLER



DOUBLE CYLINDER PULVERIZER



COMPACTOR



Manufacturing Relationship, Distributing Quality

Constromine Equipment Pvt. Ltd.

HS. NO.58/1, BEHIND AMBEKAR HOTEL,
UNDRI PISOLI ROAD, UNDRI, PUNE - 411060.

Contact: 9922 420379 / 9922 995828

Email: sales@constromine.com

www.constromine.com

Authorised Dealer:

CMD35



SILENT FEATURE

- Self-propelled.
- Heavy duty feed chain.
- Rugged drill guide construction.
- Centralized sensitive controls with Auto-Feed arrangement ensure easy operation and reduction of operator fatigue.
- Extra air outlet for cleaning or running air tools (e.g. grinding equipment).
- 7 to 14 bar airline and oil lubrication systems.
- Heavy duty tow hitch

SPECIFICATION

Working Weight (Approx.)		2890 kg	6370 lbs.
Drill Type		DTH / TH-	----
Hole Diameter	DTH	90 -127 MM	3½ - 4½inch
	TH	32-89 MM	1.25-3.5inch
Rod Length		3 MTR	10 ft.
Hole Depth		15 mtr	50 ft
Recommended Air Compressor for DTH		Air volume in cfm	450 to 550
		Pressure in psi	150 to 200
Recommended Air Compressor for TH		Air volume in cfm	400 to 600
		Pressure in psi	100
Tramming Speed		3.5 km/hr	2.18 mil/hr

CMD35DX



SILENT FEATURE

- Self-propelled.
- A 7.5 hp (5.5 kW) air powered hydraulic pump ensures efficient operational positioning.
- Heavy duty feed chain.
- Direct positioning mechanism for horizontal and vertical drilling.
- Rugged drill guide construction.
- Boom has provided with a heavy-duty lift and swing cylinders to provide rigidity while drilling.
- Centralized sensitive controls with Auto-Feed arrangement ensure easy operation.
- Optimum air consumption with high torque air motors and Rotation.

SPECIFICATION

Working Weight (Approx.)		3450 kg	7380 lbs.
Drill Type		DTH / TH-	----
Hole Diameter	DTH	90 -127 MM	3½ - 4½inch
	TH	32-89 MM	1.25-3.5inch
Rod Length		3 MTR	10 ft.
Hole Depth		15 mtr	50 ft
Recommended Air Compressor for DTH		Air volume in cfm	450 to 550
		Pressure in psi	150 to 200
Recommended Air Compressor for TH		Air volume in cfm	400 to 600
		Pressure in psi	100
Tramming Speed		3.5 km/hr	2.18 mil/hr